



PALAU ROYAL RESORT

The Palau Royal Resort (PRR) is the newest resort in Palau having opened its door in 2005. PRR offers 157 luxurious guestrooms and suites overlooking the scenic seascape of Palau's Malakal harbor. All rooms are Ocean View with balconies. PRR features a nice beach with a relaxing view of the Rock Islands.

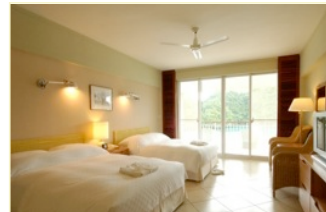
Accommodation Level: Resort

Resort Features:

- Private Beach • Swimming Pool • Restaurants
- Beach Bar • Fitness center • Tennis courts
- Children's Play Center • Spa • Shops • Internet

Room Features:

- Air Conditioning
- Ceiling Fan
- LCD T.V.
- In Room Safe and Mini Bar
- Bed sizes are Twin to King per room



Deluxe Ocean View



Waves Restaurant

2010 Weekly "Hotel and Dive Packages" Starting at \$1,300

| | | |
|-------------------|-------------------|------------------|
| Deluxe Room | \$1,775.00 (high) | \$1,440.00 (low) |
| Superior/Mod Room | \$1,610.00 (high) | \$1,300.00 (low) |

PEAK: Dec. 25 - Jan. 3 HIGH: Feb. 1 - Mar. 31/Apr. 28 - May 5/Aug. 5 - 18 LOW: Jan. 4 - 31/Apr. 1 - 17/May 6 - Aug. 4/Aug. 19 - Dec. 24

Weekly Package Includes:

- 7 Nights accommodations including all tax and service charges
- 5 Days of 2 tank diving with Sam's Tours
- Snorkel at famed Jellyfish Lake
- Dive at renowned Chandelier Cavern
- Roundtrip airport transfers
- Daily hotel transfers
- Lunch and refreshments on each diving day
- Guide, tanks and weights
- Free Nitrox up to 36% (with proof of certification)
- Free Sam's Tours water bottle
- Unlimited diving at "Sam's Macro Wall"
- Only 6 divers per guide

Exclusions:

- Departure & green fee • Dive gear rental (except tanks & weights which are included) • Airfare to and from Palau • Required government permits

*Rates valid to December 20, 2010